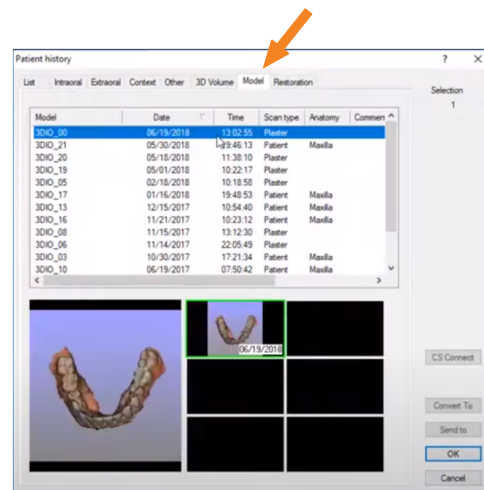


HOW TO EXPORT SCANS AS STL FORMATS FROM CARESTREAM SCANNERS

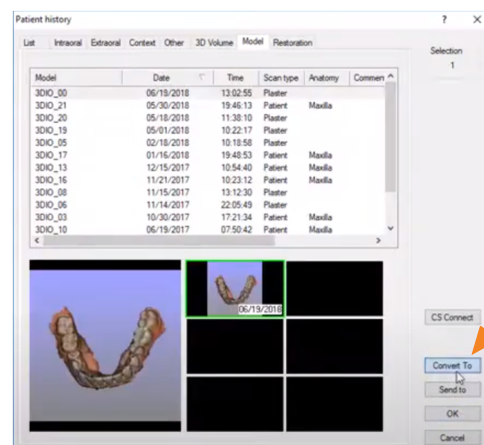


1. Complete the intra-oral scan and save.

2. Open the patient history under the **Model** tab, and select the scan to be exported.



3. After highlighting the folder, press the **Convert To** button located at the lower right corner of the window.



4. The STL Files are exported automatically to the desktop in a folder containing the patient's name.

The file is now saved in the location as directed by the user and can be copied to a flash drive or uploaded to a file sharing service as needed.

